

405211W - SHIFT WOMAN

Women's Coolmax® chef's jacket

velilla

Product technical data sheet

07

00

XS - 2XL

COOLMAX®

ECO
design

Global Recycled
Standard
© TextileExchange

shift

Soft-touch kitchen jacket. Made from recycled polyester and cotton, with Coolmax® inserts for optimal breathability. Soft-touch fabric with liquid-repellent finish. Maximum performance, comfort, and hygiene, with respect for the environment.

405211W - SHIFT WOMAN

Women's Coolmax® chef's jacket

velilla



- Unisex comfort design
- Fabric with antibacterial and liquid-repellent treatment



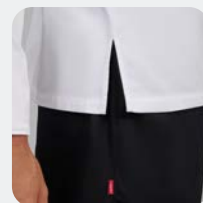
- Inner hanging strap



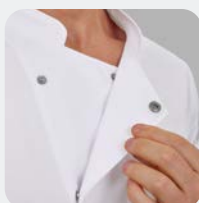
- Breathable Coolmax® fabric back



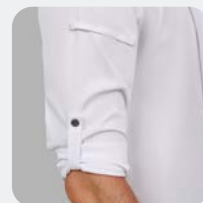
- Side vents



- Front opening with concealed snap buttons



- Tailored sleeves with roll-up cuffs with tab and snap button



- Band collar with back strap and button for apron



- Strap on right sleeve for hanging chef accessories



XS · S · M · L · XL · 2XL

Colours



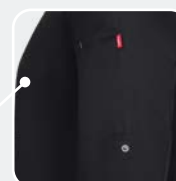
07

00

07 White / 00 Black

POCKETS

- **One pocket:** left sleeve pocket with stretch band for accessories



405211W - SHIFT WOMAN

Women's Coolmax® chef's jacket

velilla

Tejido

Front: Twill.

65% GRS recycled polyester
35% cotton
190 gsm

Back: Coolmax®

100% polyester
135 gsm

Recommended printing techniques



Transfer



Screen
printing

Instrucciones de lavado



Max temp. 40°C
Do not bleach
Iron max. 150°C
Do not tumble dry
Do not use the dryer

COOLMAX®



Coolmax® fabric makes garments a reliable choice for kitchen professionals, as it helps evaporate moisture and promotes breathability, having been designed to create a circulation system that moves moisture from the skin to the outer layer of the fabric while regulating the user's body temperature.



Este producto está confeccionado con poliéster reciclado certificado bajo el estándar internacional GRS, utilizando el equivalente a 11 botellas de plástico post-consumo.



Breathable

Evacuates water vapor
ensuring efficient
thermal regulation



Liquid-repellent

Repels water and
other liquids, preventing
absorption



Antibacterial

Antibacterial treatment that
prevents bad odors



Soft touch

Fabric with
extra soft finish

405211W - SHIFT WOMAN

velilla

Women's Coolmax® chef's jacket

Certifications

Garment certifications



Garment designed under the **Velilla Group Ecodesign management system ISO 14006**.



Certified by AENOR ISO 14006 ED-0002/2024



Global Recycled Standard, establishes the requirements for the certification of recycled material content

Velilla Group certifications



Management system that allows the company to control its environmental aspects.



Certified by AENOR ISO 14001 GA-2023/0227

405211W - SHIFT WOMAN

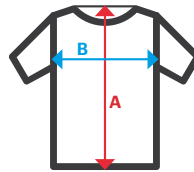
velilla

Women's Coolmax® chef's jacket

Sizes

XS/S/M/L/XL/2XL

Sizes	Back length (center)	Chest 1/2
XS	67,7	45
S	69,7	49
M	70,7	53
L	71,7	57
XL	72,7	61
2XL	73,7	65



- A: Back length (center)
- B: Chest 1/2

Dimensions in cm.

Logistics

SIZE	WEIGHT (g)	BOX HEIGHT (cm)	BOX WIDTH (cm)	BOX LENGTH (cm)	BOX VOLUME (m3)	TOTAL BOX WEIGHT (g)	UNITS PER BOX	CUSTOMS CODE	COUNTRY OF ORIGIN
XS	274	330	380	570	71,5	14.700	50	Pending data	
S	287	330	380	570	71,5	15.350	50		
M	305	330	380	570	71,5	16.250	50		
L	316	330	380	570	71,5	16.800	50		
XL	329	330	380	570	71,5	17.450	50		
2XL	346	330	380	570	71,5	18.300	50		

Approximate data



Other complementary products



405211
Chef's jacket Coolmax®