

405211 - SHIFT

Coolmax® chef's jacket

velilla

Product technical data sheet

07

00

S - 3XL

COOLMAX®

ECO
design



shift

Soft touch kitchen jacket. Made from recycled polyester and cotton, with Coolmax® inserts for optimal breathability. Soft-touch fabric with liquid-repellent finish. Maximum performance, comfort, and hygiene, with respect for the environment.

405211 - SHIFT

Coolmax® chef's jacket

velilla



- Unisex comfort design
- Fabric with antibacterial and liquid-repellent treatment



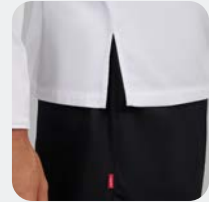
- Inner hanging strap



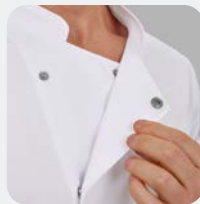
- Breathable Coolmax® fabric back



- Side vents



- Front opening with concealed snap buttons



- Tailored sleeves with roll-up cuffs with tab and snap button



- Band collar with back strap and button for apron



- Strap on right sleeve for hanging chef accessories



S · M · L · XL · 2XL · 3XL

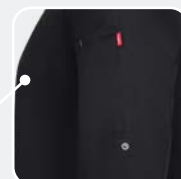
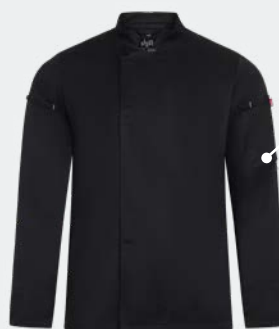
Colours



07 White / 00 Black

POCKETS

- **One pocket:** left sleeve pocket with stretch band for accessories



405211 - SHIFT

Coolmax® chef's jacket

velilla

Tejido

Front: Twill.

65% GRS recycled polyester
35% cotton
190 gsm

Back: Coolmax®

100% polyester
135 gsm

COOLMAX®



Coolmax® fabric makes garments a reliable choice for kitchen professionals, as it helps evaporate moisture and promotes breathability, having been designed to create a circulation system that moves moisture from the skin to the outer layer of the fabric while regulating the user's body temperature.

Recommended printing techniques



Transfer



Screen printing

Washing instructions



Max temp. 40°C
Do not bleach
Iron max. 150°C
Do not tumble dry
Do not use the dryer



Este producto está confeccionado con poliéster reciclado certificado bajo el estándar internacional GRS, utilizando el equivalente a 11 botellas de plástico post-consumo.



Breathable

Evacuates water vapor ensuring efficient thermal regulation



Liquid-repellent

Repels water and other liquids, preventing absorption



Antibacterial

Antibacterial treatment that prevents bad odors



Soft touch

Fabric with extra soft finish

RET Values



RET 2,4

RET: measures the breathability of the fabric; the lower the RET value, the higher the garment's breathability.

UPF Protection Values



3

UPF: measures the protection provided by the fabric against the sun's ultraviolet (UV) rays.

●●● Excellent

●●●○ Very good

●●○ Good

●○● Average

●○○ Low

○○○ Very low

405211 - SHIFT

Coolmax® chef's jacket



Certifications

Garment certifications



Garment designed under the **Velilla Group Ecodesign management system ISO 14006**.



Certified by AENOR ISO 14006 ED-0002/2024



Global Recycled Standard, establishes the requirements for the certification of recycled material content

Velilla Group certifications



Management system that allows the company to control its environmental aspects.



Certified by AENOR ISO 14001 GA-2023/0227

405211 - SHIFT

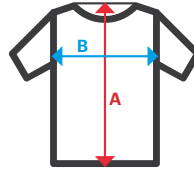
Coolmax® chef's jacket

velilla

Sizes

S / M / L / XL / 2XL / 3XL

| Sizes | Back length (center) | Chest 1/2 |
|-------|----------------------|-----------|
| S | 68,5 | 48,9 |
| M | 70,5 | 52,9 |
| L | 71,5 | 56,9 |
| XL | 72,5 | 60,9 |
| 2XL | 73,5 | 64,9 |
| 3XL | 74,5 | 68,9 |



- **A:** Back length (center)
- **B:** Chest 1/2

Dimensions in cm

Logistics

| SIZE | WEIGHT (g) | BOX HEIGHT (cm) | BOX WIDTH (cm) | BOX LENGTH (cm) | BOX VOLUME (m3) | TOTAL BOX WEIGHT (g) | UNITS PER BOX | CUSTOMS CODE | COUNTRY OF ORIGIN |
|------|------------|-----------------|----------------|-----------------|-----------------|----------------------|---------------|--------------|-------------------|
| S | 287 | 330 | 380 | 570 | 71,5 | 15.350 | 50 | Pending data | |
| M | 305 | 330 | 380 | 570 | 71,5 | 16.250 | 50 | | |
| L | 316 | 330 | 380 | 570 | 71,5 | 16.800 | 50 | | |
| XL | 329 | 330 | 380 | 570 | 71,5 | 17.450 | 50 | | |
| 2XL | 346 | 330 | 380 | 570 | 71,5 | 18.300 | 50 | | |
| 3XL | 358 | 330 | 380 | 570 | 71,5 | 18.900 | 50 | | |

Approximate data



Other complementary products



405211W
Woman's Coolmax®
chef's jacket